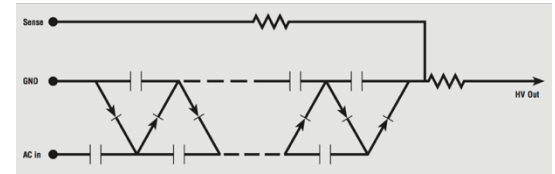


Please use this form to help provide the information needed for technical sales support with a product request for all standard products and customer designs for all high voltage multiplier assemblies.



## GENERAL INFORMATION

Company Name: \_\_\_\_\_ Request Date: \_\_\_\_\_  
 Contact Name: \_\_\_\_\_ Response Required Date: \_\_\_\_\_  
 Email Address: \_\_\_\_\_ Build Location (City & Country): \_\_\_\_\_  
 Phone Number: \_\_\_\_\_ Final Application: \_\_\_\_\_

## DESIGN REQUIREMENTS

### Basic Input Characteristics

Input Voltage (V): \_\_\_\_\_  
 Input Voltage Type: Peak-to-Peak Peak RMS  
 Input Waveform: Sine Square  
 Other \_\_\_\_\_  
 Waveform Type: Symmetric Positive Negative  
 Other \_\_\_\_\_  
 Input Frequency or Repetition Rate (Hz): \_\_\_\_\_  
 Maximum Operating Temperature (°C): \_\_\_\_\_

### Basic Output Characteristics

Load Type Resistive Capacitive  
 Ripple (%): \_\_\_\_\_  
 Ripple Maximum: \_\_\_\_\_ % at \_\_\_\_\_ mA Output  
 Maximum Voltage Output at Full Load (V): \_\_\_\_\_  
 Maximum Output Current (mA): \_\_\_\_\_

### Output Options

Voltage Tap: \_\_\_\_\_ V at \_\_\_\_\_ mA Load  
 Bleed Resistor (MΩ): \_\_\_\_\_  
 Series Output Resistor (kΩ): \_\_\_\_\_

### Mechanical and Package Requirements

Maximum Length (in or cm): \_\_\_\_\_  
 Maximum Width (in or cm): \_\_\_\_\_  
 Maximum Height (in or cm): \_\_\_\_\_  
 Mounting Dimensions/Type: \_\_\_\_\_

### Terminals/Connection Types (Include Wire AWG and Length)

\_\_\_\_\_

### Other Requirements

Full Encapsulation Required: Yes No

## NOTES