



**HVPSI**

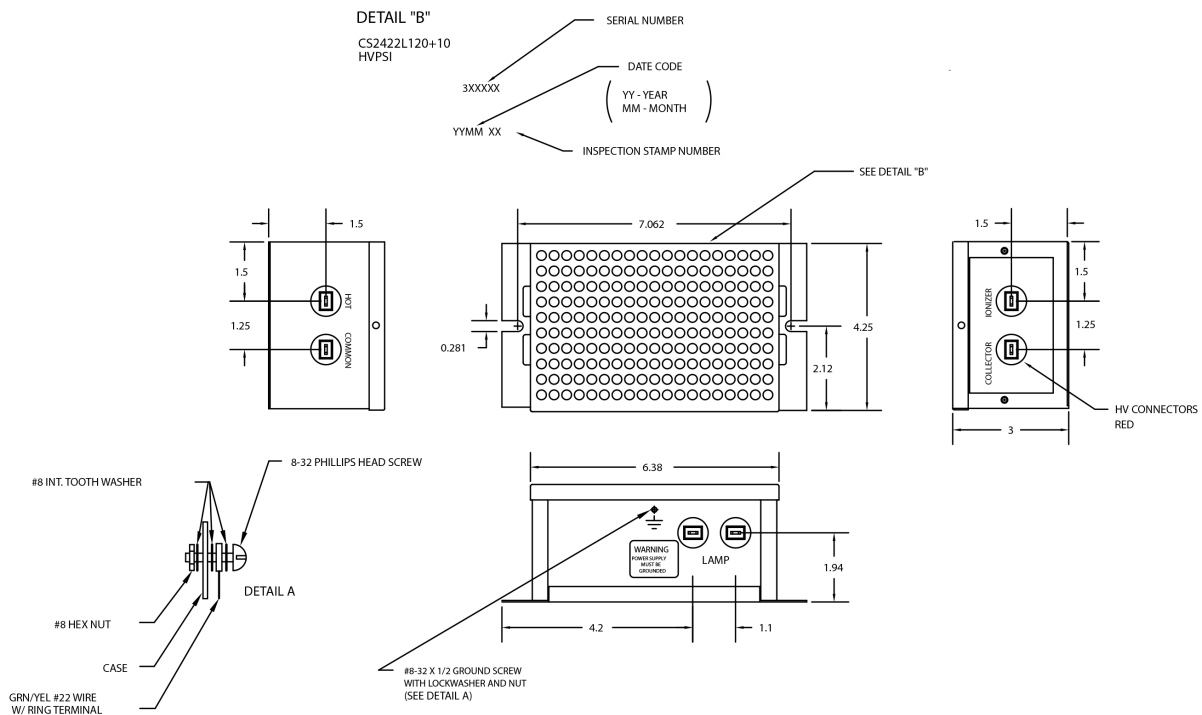
## 2422 Series

High Voltage Power Supplies

- Cost Effective
- Metal Case
- Reliable Solid-State Design
- Maintenance Free
- Automatic Recovery, Self-Restoring
- High Frequency Switch-Mode Design
- UL Recognized Versions Available
- RoHS Versions Available



	Conditions	Value		Units
		L10	L12	
<b>Input</b>				
<b>Input Voltage</b>	All Versions	120		VAC
<b>Power</b>	At Max load	45	55	W
<b>Output</b>				
<b>Voltages Available</b>	Primary Output	10	12	kVDC max
<b>Power</b>	Nominal Input, Max Vo	35	45	W
<b>Current, Primary Output</b>	Nominal Input, Max Vo	3.5		mA
<b>Line Regulation</b>	Over Input Range	<3%	<4%	VDC
<b>Current, Secondary Output</b>	At Max Primary Vo	375		uA
<b>Regulation, Primary Vo</b>	Any Static Load, Max Vo	<3%	<5%	VDC
<b>Ripple</b>	Full Load, Max Vo	<5%		Vp-p
<b>Stability</b>	Over 8hr, 30 min warm up	<0.5%		VDC
<b>Environmental</b>				
<b>Operating Temperature</b>	Case Temp, Full Load, Max Vo	0 to +60		°C
<b>Temperature Coefficient</b>	Over the Operating Temperature	0.09		%/°C
<b>Storage</b>	Non-Operating, Case Temp	-40 to +85		°C
<b>Humidity</b>	Non-Condensing	0 to 95%		RH
<b>Altitude</b>	Standard Operating Conditions	0 to 10000		Feet



Part Number	Input Voltage	Ionizer Voltage	Input Frequency	Collector Voltage	Polarity	Output Power	Typical Output Current
ACN2422L10	120 VAC	10kV DC	50 / 60 Hz	5kV DC	Negative	35 Watts	3.5 mA
ACP2422L10	120 VAC	10kV DC	50 / 60 Hz	5kV DC	Positive	35 Watts	3.5 mA
ACN2422L12	120 VAC	12kV DC	50 / 60 Hz	6kV DC	Negative	45 Watts	3.5 mA
ACP2422L12	120 VAC	12kV DC	50 / 60 Hz	6kV DC	Positive	45 Watts	3.5 mA

### Applications:

- Electrostatic Air Cleaners
- Electrostatic Oil Cleaners

### Mechanical:

- Case: Metal
- Input Voltage Termination: ¼" black insulated terminals
- "HV On" Indicating Light Termination: ¼" insulated terminals for LED
- High Voltage Termination: ¼" red insulated terminals
- Earth Ground: #8-32 screw
- Operating Temperature Range: 0°C to +60°C
- Storage Temperature Range: -40°C to +85°C

**NOTICE: This power supply requires adequate ground connection for operation. Failure to provide ground may result in failure of the power supply. Proper ground connections must be made to #8-32 ground screw on the metal case.**