



HVPSI

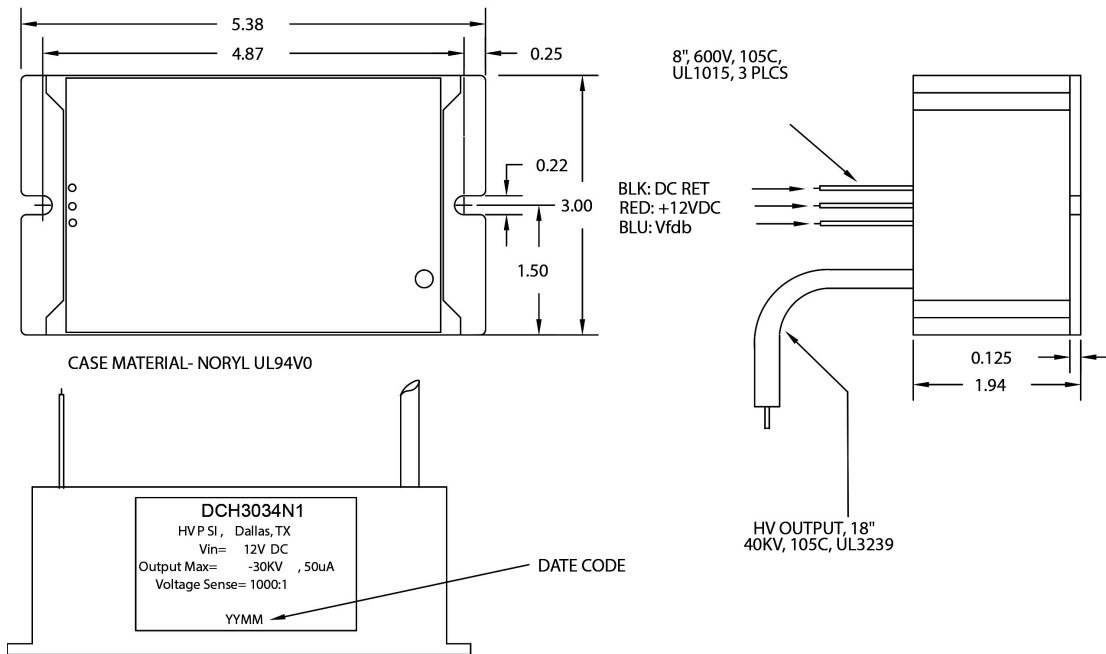
DCH3034 Series

Input-Output Proportional 0 to 30kV
DC-DC High Voltage Power Supply

- 0 to 12VDC Input voltage
- 1000:1 Feedback Voltage Divider (matched for 10MΩ)
- Zero to Full Output
- Positive and Negative Models
- Up to 50uA Output Current
- Short-circuit Protection
- Rugged, encapsulated module
- Low EMI Sine-wave topology
- Low ripple
- Noryl Enclosure
- Mounting Flange



	Conditions	Value	Units
Input			
Input Voltage	All Versions	0 to 12	VDC
Power	At Max load	2	W
Output			
Voltages Available	Primary Output	±30	kVDC max
Voltage Adjustment	Proportional to Input Voltage	0 to 100%	-
Power	Nominal Input, Max Vo	1.2	W
Current, Primary Output	Nominal Input, Max Vo	40	uA
Regulation, Primary Vo	Any Static Load, Max Vo	18%	VDC
Ripple	Full Load, Max Vo	<1%	Vp-p
Stability	Over 8hr, 30 min warm up	<0.2%	VDC
Environmental			
Operating Temperature	Case Temp, Full Load, Max Vo	0 to +60	°C
Temperature Coefficient	Over the Operating Temperature	0.30	%/°C
Storage	Non-Operating, Case Temp	-40 to +85	°C
Humidity	Non-Condensing	0 to 95%	RH
Altitude	Standard Operating Conditions	0 to 10000	Feet



Part Number	Input Voltage	Output Voltage	Polarity	Output Power	Maximum Output Current
DCH3034P1	0 to 12 VDC	0 to 30kV	Positive	1.2 Watts	40uA
DCH3034N1	0 to 12 VDC	0 to -30kV	Negative	1.2 Watts	40uA

Applications:

- Photomultipliers
- Ionizers
- High Voltage Biasing
- CRT Grid Circuits
- Biasing
- Dielectric Testing
- Piezoelectric Drivers
- Electrostatic Chucks
- Sealing Applications
- Ink Jet Printers
- Photo Detectors

Mechanical:

- Dimensions: 5.38" x 3.00" x 1.94"
- Pins: 0.040" Diameter
- Weight: 14.0 Ounces
- Operating Temperature Range: -40°C to +70°C