



GPE SERIES

10 to 30kV, 15mA, 100nS
Axial Lead Rectifier Assemblies



Features

- Epoxy Molded Body

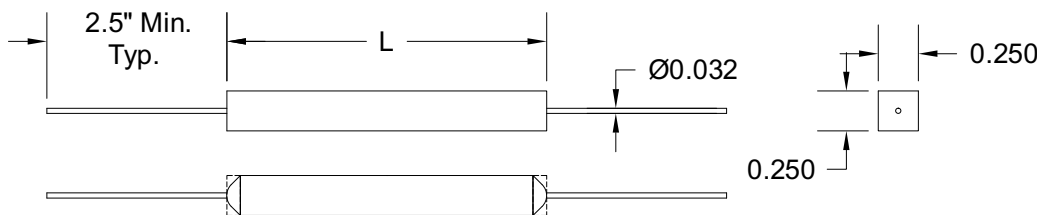
Specifications¹

Part Number	V_{RRM} V	I_{FAVM} mA	V_F V	I_R μ A	I_{FSM} A	T_{RR} nS	L in.
G10PE	10000	15	23	0.2	3	100	1
G12PE	12000	15	25	0.2	3	100	1
G15PE	15000	15	28	0.2	3	100	1
G20PE	20000	15	35	0.2	3	100	1
G25PE	25000	15	42	0.2	3	100	1
G30PE	30000	15	48	0.2	3	100	1

Temperature °C	
Storage Temperature	-55 to 150
Operating Temperature	-55 to 150

¹25°C ambient temperature unless stated otherwise.

Drawings



Dimensions in inches, tolerances ± 0.020 except as noted

Specification Definitions

Specifications		Conditions
V_{RRM}	Maximum Repetitive Reverse Voltage	-
I_{FAVM}	Maximum Average Forward Current	At $T_A = 55^\circ\text{C}$
V_F	Maximum Forward Voltage Drop	At I_{FAVM}
I_R	Maximum Leakage Current	At V_{RRM}
I_{FSM}	Maximum Surge Current	At 8.3 mS, Single Half Sine
T_{RR}	Maximum Reverse Recovery Time	$I_F = 0.5 I_{FAVM}$; $I_R = -I_{FAVM}$; $I_{RR} = -0.25 I_{FAVM}$

Note: Specifications subject to change without notice. Photo is representation only.

