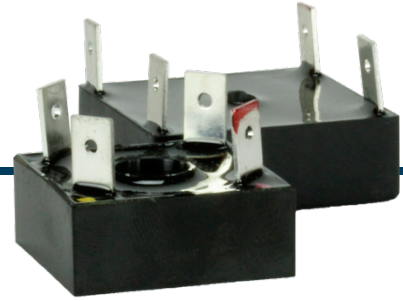




HVFWB SERIES

5 to 15kV Per Leg, 1 to 5A, 150 to 250nS
Full Wave Bridge Rectifiers



Features

- Compact High Voltage Single Phase, Full Wave Bridges
- Plastic Case Body, Epoxy Filled, UL94 HB Rated

Specifications¹

Part Number	V _{RRM} V	I _{FAVM} ² A	V _F V	I _R μA	I _{FSM} A	T _{RR} nS	L in.	Figure #
1HVFWB5KBF	5000	1	7.2	0.3	20	250	1.25	Figure 1
1HVFWB5KCF	5000	1	7.2	0.3	20	250	1.50	Figure 2
2HVFWB5KDF	5000	2	6.5	1.0	50	150	2.00	Figure 2
4HVFWB5KCF	5000	4	7.0	0.5	100	250	1.50	Figure 2
4HVFWB5KDF	5000	4	7.0	0.5	100	250	2.00	Figure 2
5HVFWB5KEF	5000	5	7.5	0.5	100	250	2.50	Figure 2
1HVFWB10KBF	10000	1	14.4	0.3	20	250	1.25	Figure 1
1HVFWB10KCF	10000	1	14.4	0.3	20	250	1.50	Figure 2
2HVFWB10KDF	10000	2	13.0	1.0	50	150	2.00	Figure 2
2HVFWB10KEF	10000	2	13.0	1.0	50	150	2.50	Figure 2
4HVFWB10KEF	10000	4	14.0	0.5	100	250	2.50	Figure 2
2HVFWB15KEF	15000	2	20.0	1.0	50	150	2.50	Figure 2

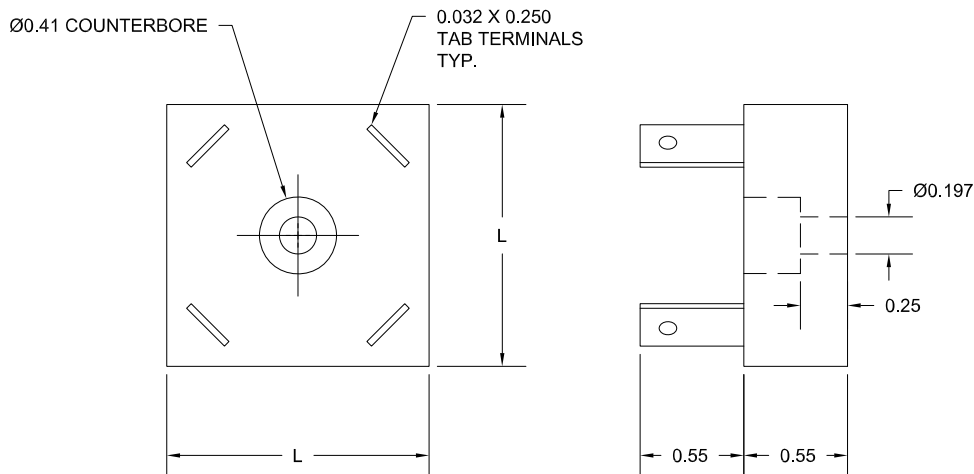
Temperature °C	
Storage Temperature	-65 to 150
Operating Temperature	-55 to 150

¹25°C ambient temperature unless stated otherwise.

²All current ratings require assembly on suitably engineered heat sink using a quality heat coupling compound.

Drawings

Figure 1

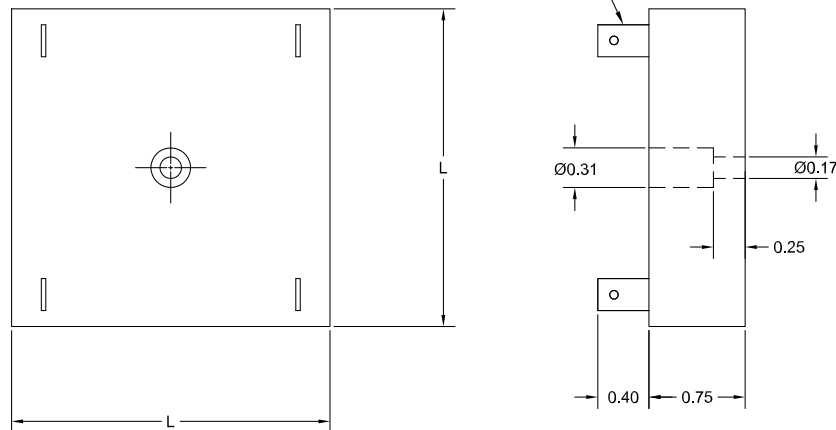




HVFWBF SERIES

Figure 2

0.032 x 0.250
TAB TERMINALS
TYP.



Dimensions in inches, tolerances ± 0.020 except as noted

Specification Definitions

Specifications		Conditions
V_{RRM}	Maximum Repetitive Reverse Voltage	Per Leg
I_{FAVM}	Maximum Average Forward Current	At T _C = 55°C
V_F	Maximum Forward Voltage Drop	At 0.5 I _{FAVM} , Per Leg
I_R	Maximum Leakage Current	At V _{RRM}
I_{FSM}	Maximum Surge Current	At 8.3mS, Single Half Sine
T_{RR}	Maximum Reverse Recovery Time	I _F = 0.5A; I _R = -1.0A; I _{RR} = -0.25A

Note: Specifications subject to change without notice. Photo is representation only.

