



HVHP SERIES

7.2 to 29kV, 2.0 to 4.2A, Standard Recovery
Rectifier Blocks with Insert Mounting



Features

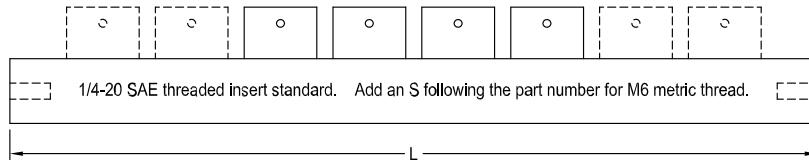
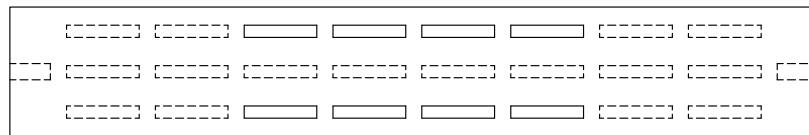
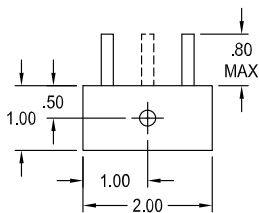
- Molded Epoxy Body

Specifications¹

Part Number	V _{RRM} V	I _{FAVM1} A	I _{FAVM2} A	I _{FAVM3} A	I _{FAVM4} A	V _F V	I _{R1} μA	I _{R2} μA	I _{FSM} A	L in.
HVHP7K	7200	4.2	3.5	12.0	10.0	12	400	600	600	6.5
HVHP10K	10800	3.2	2.6	12.0	10.0	18	400	600	600	6.5
HVHP19K	19200	2.6	2.0	10.0	8.4	32	400	600	600	12.5
HVHP29K	29000	2.0	1.4	9.0	7.5	48	400	600	600	12.5

¹25°C ambient temperature unless stated otherwise.

Drawings



Dimensions in inches, tolerances ± 0.020 except as noted

Specification Definitions

Specifications		Conditions
V _{RRM}	Maximum Repetitive Reverse Voltage	-
I _{FAVM1}	Maximum Average Forward Current	At 35°C Ambient, Natural Convection
I _{FAVM2}	Maximum Average Forward Current	At 100°C Ambient, Natural Convection
I _{FAVM3}	Maximum Average Forward Current	At 35°C Ambient, Forced Air Cooling at 700 LFM
I _{FAVM4}	Maximum Average Forward Current	At 100°C Ambient, Forced Air Cooling at 700 LFM
V _F	Maximum Forward Voltage Drop	At I _F = 12A
I _{R1}	Maximum Leakage Current	At V _{RRM}
I _{R2}	Maximum Leakage Current	At V _{RRM} , 100°C Ambient
I _{FSM}	Maximum Surge Current	At 8.3 mS, Single Half Sine

Note: Specifications subject to change without notice. Photo is representation only.

