



RHV SERIES

15 to 150kV, 25mA, 100nS
Axial Lead Rectifier Assemblies



Features

- Epoxy Molded Body

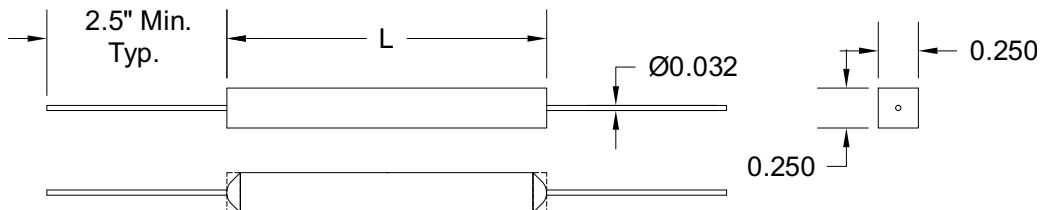
Specifications¹

Part Number	V _{RRM} V	I _{FAVM} mA	V _F V	I _R μA	I _{FSM} A	T _{RR} nS	L in.
RHV15	15000	25	35	1	3	100	2
RHV20	20000	25	55	1	3	100	2
RHV25	25000	25	55	1	3	100	2
RHV30	30000	25	70	1	3	100	3
RHV40	40000	25	110	1	3	100	3
RHV50	50000	25	110	1	3	100	3
RHV60	60000	25	110	1	3	100	3
RHV90	90000	25	165	1	3	100	3
RHV120	120000	25	220	1	3	100	3
RHV150	150000	25	275	1	3	100	3

Temperature °C	
Storage Temperature	-55 to 150
Operating Temperature	-55 to 150

¹125°C ambient temperature unless stated otherwise.

Drawings



Dimensions in inches, tolerances ±0.020 except as noted

Specification Definitions

Specifications	Conditions
V _{RRM} Maximum Repetitive Reverse Voltage	-
I _{FAVM} Maximum Average Forward Current	At T _A = 55°C
V _F Maximum Forward Voltage Drop	At I _{FAVM}
I _R Maximum Leakage Current	At V _{RRM}
I _{FSM} Maximum Surge Current	At 8.3 mS, Single Half Sine
T _{RR} Maximum Reverse Recovery Time	I _F = 0.5 I _{FAVM} ; I _R = -I _{FAVM} ; I _{RR} = -0.25 I _{FAVM}

Note: Specifications subject to change without notice. Photo is representation only.

