



RSUF SERIES

2 to 7kV, 500 to 650mA, 35nS
Axial Lead Rectifier Assemblies



Features

- Epoxy Molded Body

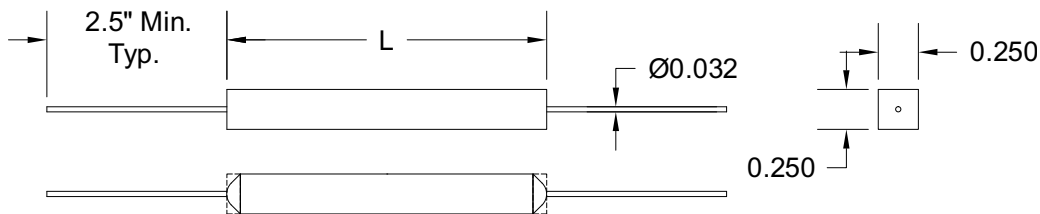
Specifications¹

Part Number	V _{RRM} V	I _{FAVM} mA	V _F V	I _R μA	I _{FSM} A	T _{RR} nS	L in.
RSUF2	2000	650	2.6	5	10	35	1.0
RSUF3	3000	650	3.9	5	10	35	1.5
RSUF5	5000	550	6.5	5	10	35	2.0
RSUF7	7000	500	9.1	5	10	35	3.0

Temperature °C	
Storage Temperature	-55 to 150
Operating Temperature	-55 to 150

¹125°C ambient temperature unless stated otherwise.

Drawings



Dimensions in inches, tolerances ±0.020 except as noted

Specification Definitions

Specifications	Conditions
V _{RRM} Maximum Repetitive Reverse Voltage	-
I _{FAVM} Maximum Average Forward Current	At T _A = 55°C
V _F Maximum Forward Voltage Drop	At I _{FAVM}
I _R Maximum Leakage Current	At V _{RRM}
I _{FSM} Maximum Surge Current	At 8.3 mS, Single Half Sine
T _{RR} Maximum Reverse Recovery Time	I _F = 250mA; I _R = -500mA; I _{RR} = -125mA

Note: Specifications subject to change without notice. Photo is representation only.

