



RTHV SERIES

8 to 80kV, 100mA, 100nS
Axial Lead Rectifier Assemblies



Features

- Epoxy Molded Body

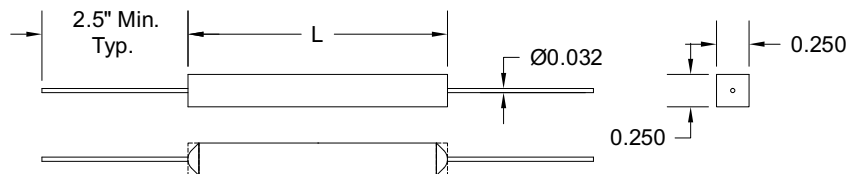
Specifications¹

Part Number	V _{RRM} V	I _{FAVM} mA	V _F V	I _R μA	I _{FSM} A	T _{RR} nS	L in.
RTHV08	8000	100	22	2	10	100	1.0
RTHV10	10000	100	22	2	10	100	1.0
RTHV12	12000	100	26	2	10	100	1.5
RTHV15	15000	100	26	2	10	100	1.5
RTHV20	20000	100	44	2	10	100	2.0
RTHV25	25000	100	52	2	10	100	2.5
RTHV30	30000	100	52	2	10	100	3.0
RTHV40	40000	100	78	2	10	100	3.0
RTHV45	45000	100	78	2	10	100	3.0
RTHV50	50000	100	105	2	10	100	3.0
RTHV60	60000	100	105	2	10	100	3.0
RTHV80	80000	100	140	2	10	100	3.0

Temperature °C	
Storage Temperature	-55 to 175
Operating Temperature	-55 to 125
Maximum Junction Temperature	125

¹25°C ambient temperature unless stated otherwise.

Drawings



1.0" & 1.5" case lengths may have rounded ends.
Dimensions in inches, tolerances ±0.020 except as noted

Specification Definitions

Specifications	Conditions
V _{RRM} Maximum Repetitive Reverse Voltage	-
I _{FAVM} Maximum Average Forward Current	At T _A = 55°C
V _F Maximum Forward Voltage Drop	At I _{FAVM}
I _R Maximum Leakage Current	At V _{RRM}
I _{FSM} Maximum Surge Current	At 8.3 mS, Single Half Sine
T _{RR} Maximum Reverse Recovery Time	I _F = 0.5 I _{FAVM} ; I _R = -I _{FAVM} ; I _{RR} = -0.25 I _{FAVM}

Note: Specifications subject to change without notice. Photo is representation only.

