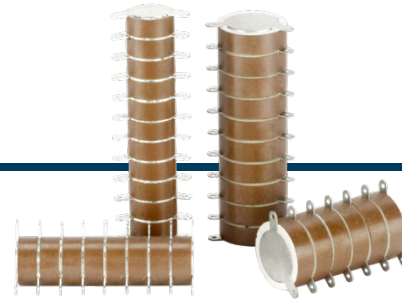




ST3 SERIES

10 to 12kV, 500 to 1000pF
Capacitor Stacks



Features

- Capacitor Stacks with 140° Solder Tabs, Class II
- Silver Plated Electrodes
- Use in Oil or Encapsulated
- Multiple Configurations Standard; Custom Versions Available

Specifications

Part Number ¹	C ² pF	Tolerance ±%	V _{RATE} ³ kVDC	V _{WITHSTAND} kVDC	# of Discs	L ⁴ in [mm]	D ⁴ in [mm]	T ⁵ in [mm]	A ⁶ in [mm]
Y5P Dielectric Subseries									
ST3Y5P501•12KV04	500	K,M,Z	12.0	18.0	4	0.79 [20.1]	0.39 [10.0]	0.18 [4.5]	0.33 [8.4]
ST3Y5P501•12KV05	500	K,M,Z	12.0	18.0	5	0.99 [25.1]	0.39 [10.0]	0.18 [4.5]	0.33 [8.4]
ST3Y5P501•12KV06	500	K,M,Z	12.0	18.0	6	1.18 [30.1]	0.39 [10.0]	0.18 [4.5]	0.33 [8.4]
ST3Y5P501•12KV07	500	K,M,Z	12.0	18.0	7	1.38 [35.0]	0.39 [10.0]	0.18 [4.5]	0.33 [8.4]
ST3Y5P501•12KV08	500	K,M,Z	12.0	18.0	8	1.57 [40.0]	0.39 [10.0]	0.18 [4.5]	0.33 [8.4]
ST3Y5P501•12KV09	500	K,M,Z	12.0	18.0	9	1.77 [45.0]	0.39 [10.0]	0.18 [4.5]	0.33 [8.4]
ST3Y5P501•12KV10	500	K,M,Z	12.0	18.0	10	1.97 [49.9]	0.39 [10.0]	0.18 [4.5]	0.33 [8.4]
ST3Y5P501•12KV11	500	K,M,Z	12.0	18.0	11	2.16 [54.9]	0.39 [10.0]	0.18 [4.5]	0.33 [8.4]
ST3Y5P501•12KV12	500	K,M,Z	12.0	18.0	12	2.36 [59.9]	0.39 [10.0]	0.18 [4.5]	0.33 [8.4]
ST3Y5P102•10KV04	1000	K,M,Z	10.0	15.0	4	0.69 [17.6]	0.52 [13.1]	0.16 [3.9]	0.38 [9.7]
ST3Y5P102•10KV05	1000	K,M,Z	10.0	15.0	5	0.87 [22.0]	0.52 [13.1]	0.16 [3.9]	0.38 [9.7]
ST3Y5P102•10KV06	1000	K,M,Z	10.0	15.0	6	1.04 [26.3]	0.52 [13.1]	0.16 [3.9]	0.38 [9.7]
ST3Y5P102•10KV07	1000	K,M,Z	10.0	15.0	7	1.21 [30.7]	0.52 [13.1]	0.16 [3.9]	0.38 [9.7]
ST3Y5P102•10KV08	1000	K,M,Z	10.0	15.0	8	1.38 [35.0]	0.52 [13.1]	0.16 [3.9]	0.38 [9.7]
ST3Y5P102•10KV09	1000	K,M,Z	10.0	15.0	9	1.55 [39.3]	0.52 [13.1]	0.16 [3.9]	0.38 [9.7]
ST3Y5P102•10KV10	1000	K,M,Z	10.0	15.0	10	1.72 [43.7]	0.52 [13.1]	0.16 [3.9]	0.38 [9.7]
ST3Y5P102•10KV11	1000	K,M,Z	10.0	15.0	11	1.89 [48.0]	0.52 [13.1]	0.16 [3.9]	0.38 [9.7]
ST3Y5P102•10KV12	1000	K,M,Z	10.0	15.0	12	2.06 [52.3]	0.52 [13.1]	0.16 [3.9]	0.38 [9.7]
ST3Y5P102•12KV04	1000	K,M,Z	12.0	18.0	4	0.85 [21.5]	0.57 [14.5]	0.19 [4.8]	0.38 [9.7]
ST3Y5P102•12KV05	1000	K,M,Z	12.0	18.0	5	1.06 [26.8]	0.57 [14.5]	0.19 [4.8]	0.38 [9.7]
ST3Y5P102•12KV06	1000	K,M,Z	12.0	18.0	6	1.26 [32.1]	0.57 [14.5]	0.19 [4.8]	0.38 [9.7]
ST3Y5P102•12KV07	1000	K,M,Z	12.0	18.0	7	1.47 [37.4]	0.57 [14.5]	0.19 [4.8]	0.38 [9.7]
ST3Y5P102•12KV08	1000	K,M,Z	12.0	18.0	8	1.68 [42.7]	0.57 [14.5]	0.19 [4.8]	0.38 [9.7]
ST3Y5P102•12KV09	1000	K,M,Z	12.0	18.0	9	1.89 [48.0]	0.57 [14.5]	0.19 [4.8]	0.38 [9.7]
ST3Y5P102•12KV10	1000	K,M,Z	12.0	18.0	10	2.10 [53.3]	0.57 [14.5]	0.19 [4.8]	0.38 [9.7]
ST3Y5P102•12KV11	1000	K,M,Z	12.0	18.0	11	2.31 [58.6]	0.57 [14.5]	0.19 [4.8]	0.38 [9.7]
ST3Y5P102•12KV12	1000	K,M,Z	12.0	18.0	12	2.52 [63.9]	0.57 [14.5]	0.19 [4.8]	0.38 [9.7]

¹ST3Y5P models are offered with K (± 10%), M (± 20%), and Z (+80%, -20%) capacitance tolerances. Substitute the "*" in the part number with the preferred tolerance. Inquire for additional information.

²Capacitance per disc with a 20% tolerance.

³Rated voltage per disc, dielectric withstand 150% of rated.

⁴Maximum dimension.

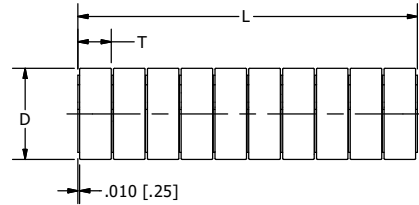
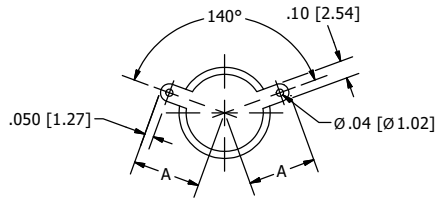
⁵T has a ±10% tolerance.

⁶A has a ±0.040in [1.02mm] tolerance.



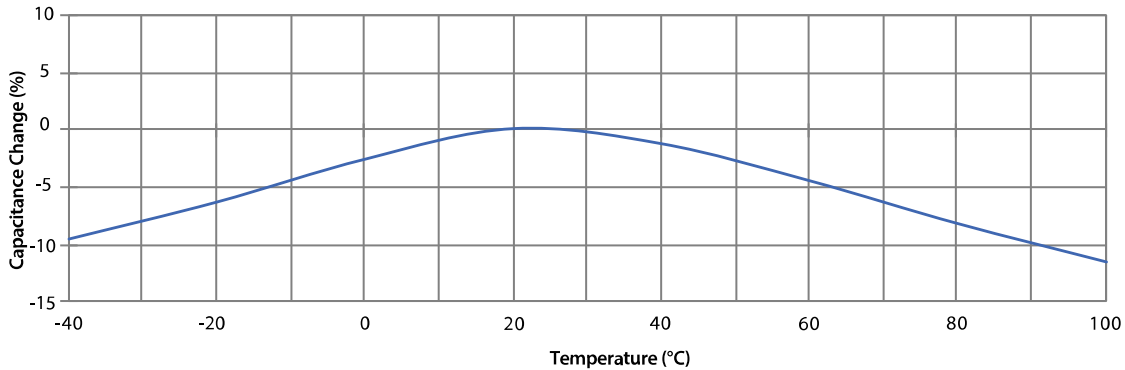
ST3 SERIES

Drawings and Characteristics

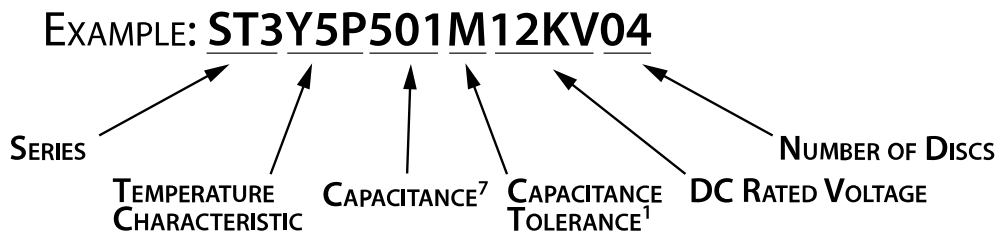


Dimensions in inches [mm]

Y5P TYPICAL TEMPERATURE CHARACTERISTICS CURVE



Part Number Decoder:



⁷Capacitance decoder:

For capacitance values less than 10pF, digits before the "R" are significant digits, while digits after the "R" are the decimal values after the significant digits. For example, 4R7 = 4.7pF, since the 4 is the significant digit while the 7 is the digit after the decimal.

For capacitance values 100pF and higher, the first and second digits are significant digits, while the third digit expresses the number of zeros to follow the two significant digits. For example, 152 = 1500pF, since the 1 and the 5 are the significant digits with 2 zeros that follow.

Note: Specifications subject to change without notice. Photo is representation only.

